



DC-Air: Wireless Intraoral Sensor with Improved Image Quality

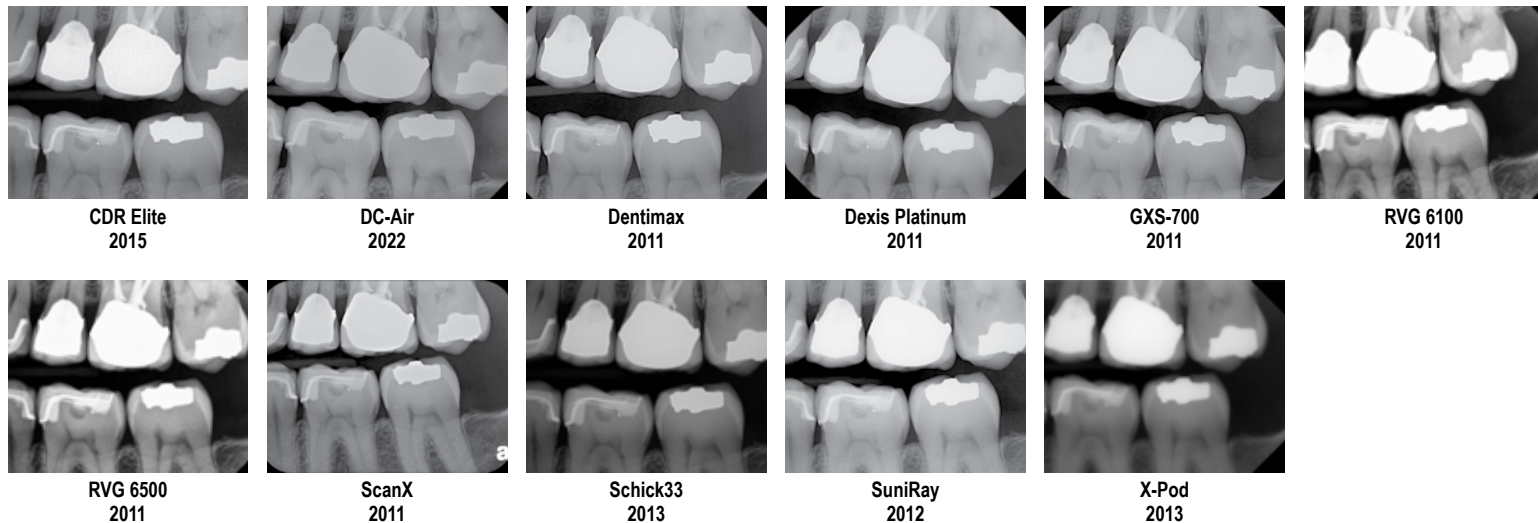
Supplementary Information

The following digital radiographs provide a comparison of image quality among various systems.

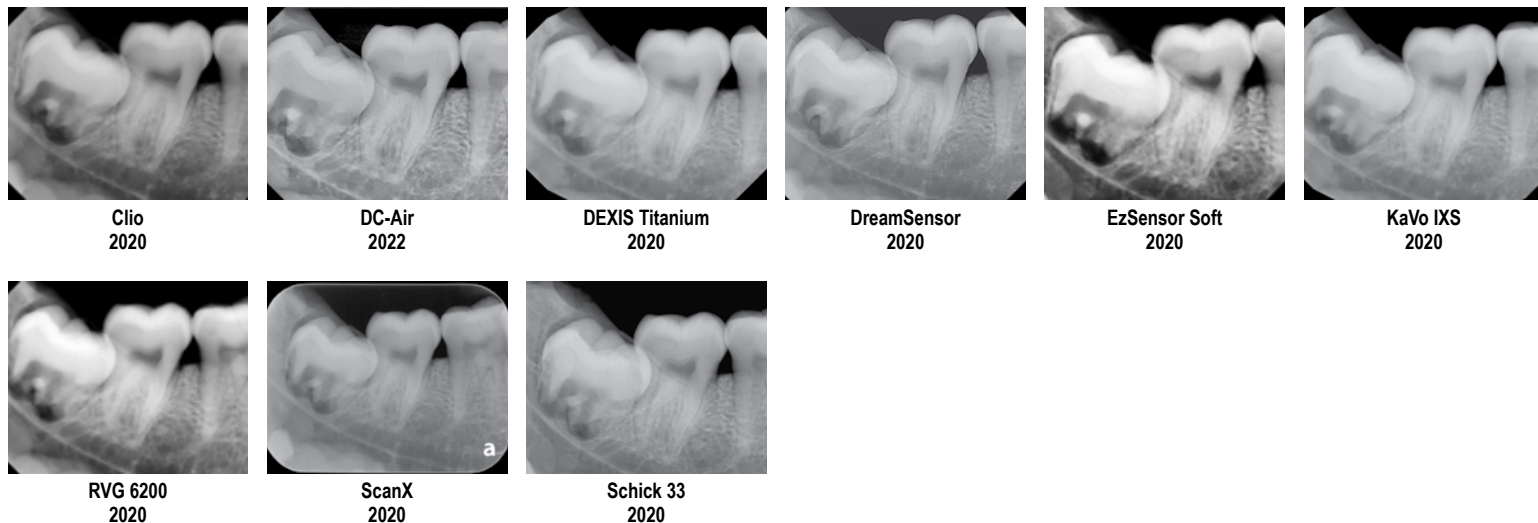
Radiographs were made as part of ongoing CR evaluations between 2011 and 2022. In each case, the default image processing algorithms and sharpening filters normally specified were in use. Images were exported at the highest resolution, but may not accurately represent the quality as observed on the original system.

[Click on each image to view it full size.](#)

Group 1: Left Posterior Bitewing



Group 2: Jawbone Phantom



All of these systems are/were considered to be diagnostic and clinically acceptable, and all are/were used in clinical practice with success. CR Scientists and Clinicians observed that the clarity and subtle details produced by DC-Air radiographs were improved over conventional CMOS sensors, and the direct conversion technology appears to be a significant advancement. Continued clinical research and observation are needed to determine the full extent of clinical benefits.