

| BRAND NAME | DESCRIPTION | MANUFACTURER | PURCHASE SOURCE |
|---|--|-------------------------|--|
| EYE PROTECTION | | | |
| <i>Efficacy Criteria: Completely covers eyes to block splatter, tolerates routine disinfection, comfortable.</i> | | | |
| Face Shield For Operator | | | |
| Loupes Face Shield | Shield that accommodates loupes & headlamp | Ultra Light Optics | ultralightoptics.com |
| Eye Covering for Operator or Patient | | | |
| Googles Eye Shields | Wrap around disposable plastic lens & frame | KaVo Kerr Group | Most Dental Distributors |
| Helpful Accessory | | | |
| Kimtech Lens Cleaning Station | Kit= Cleaning solution & non-scratching Kimwipes | Kimberly Clark | Most Dental Distributors |
| FACE MASKS | | | |
| <i>Efficacy Criteria: Adapts well to facial contours (peripheral fit), high filtration of very small particles, does not contact nose or lips.</i> | | | |
| Soft Pleated Masks | | | |
| Critical Cover PFL with Magic Arch | Only Level 3 mask with potential for 360° excellent facial fit on most faces (Headband 608 series) or (Earloop 615 series) | Alpha ProTech | 800-749-1363 Alphaprotech.com |
| Isolator Plus N95 Mask | N95 certified respirator has same design as Critical Cover, but upgraded filtration & double headband | Crosstex | Most Dental Distributors |
| Preformed Cup Masks | | | |
| Triple Layer Molded Mask #2042 | Pre-formed cup & headband with good fit | 3M | Benco Dental |
| #1860 N95 Molded Mask | N95 certified pre-formed cup mask | 3M | Benco Dental |
| GLOVES | | | |
| <i>Efficacy Criteria: Low defects, good fit, good tactile sensitivity, resistance to tearing, adequate cuff length.</i> | | | |
| Xlim Nitrile Gloves | Nitrile powder-free exam gloves | Cranberry | henryschein.com |
| Nitrident Stretch+ | Nitrile powder-free exam gloves | Am-Touch | amtouch.com |
| AloePRO Synthetic Exam Gloves | Textured <u>latex</u> powder-free exam gloves | Dash Medical | dashmedical.com |
| Le Soothe Sapphire | <u>Latex</u> powder free exam gloves | SmartPractice | smartpractice.com |
| PROTECTIVE CLOTHING THAT IS AUTOCLAVABLE & DISPOSABLE | | | |
| <i>Efficacy Criteria: Made of polypropylene to tolerate repeated steam sterilization</i> | | | |
| Knee Length Disposable Lab Coat | SMS fabric coats come in 12 colors | Sara Glove | 866-664-7272 saraglove.com |
| Lab Jacket, Disposable | SMS fabric coats come in 30 colors | Sara Glove | 866-664-7272 saraglove.com |
| PRE-TREATMENT RINSE | | | |
| <i>Efficacy Criteria: Validated log₁₀ reduction of relevant microbes <u>within</u> clinically relevant type & amount of human protein.</i> | | | |
| ioRinse RTU | 100 ppm <u>molecular</u> iodine ready-to-use rinse (use two 30-second rinses) | ioTech International | 561-509-0205 Ext. 5 lotechinternational.com |
| Peridex | 0.12 chlorhexidine gluconate | 3M | Most Dental Distributors |
| DENTAL UNIT WATERLINE VALIDATION | | | |
| <i>Efficacy Criteria: For validation of heterotrophic organism counts in water emitted from unit syringes & handpieces.</i> | | | |
| Independent Lab that Verifies Dental Unit Water by Culturing Water Samples Submitted by Office | | | |
| Standard Check D-R2A | Office orders online number of sample tubes wanted & receives kit with directions. & packaging for sending samples to lab for testing. | Sterisil | 719-662-7200 sterisil.com |
| “Quick Look” Dental Unit Water Culture Performed by Staff In-Office | | | |
| Quick Pass In-Office Waterline Tester | Culture medium on paddle, shows results in about 72 hours. | ProEdge Dental Products | henryschein.com |

AIR PURIFICATION DURING ACTIVE TOOTH EXCAVATION

Efficacy Criteria: Provides reliable high efficacy air purification during active rotary instrument use & requires minimal maintenance.

| | | | |
|-------------|--|------------------|--------------------------------|
| ECM Phantom | 2x4 foot fan filter unit provides HEPA pure air; ceiling hung over treatment area. | Gordon Cleanroom | 888-315-1561 gordon-inc.com |
|-------------|--|------------------|--------------------------------|

SURFACE DISINFECTANTS

Efficacy Criteria: Verified fast kill of resistant non-enveloped virus in presence of fresh human whole blood.

| | | | |
|---------------------------------------|---|--------------------|--|
| ZaPro Surface Disinfectant | 95% wt ethyl alcohol, 0.13 wt benzalkonium chloride, 0.005% wt zinc pyrithione (1 min contact time) | Cao Group | 877-877-9778 caogroup.com |
| BioSURF | 70.5% wt ethyl alcohol, .02% chlorhexidine gluconate (3 min contact time) | Micrylium | 877-777-3303 www.purelifedental.com |
| Lysol Brand III IC Disinfectant Spray | 58% wt ethyl alcohol, 0.1% benzalkonium chloride (10 min contact time) | Reckitt Benckister | Most Dental Distributors |

HAND ANTISEPTICS

Efficacy Criteria: Rapid antimicrobial activity & non-irritating to skin.

Hand Wash 4% Chlorhexidine Formulation

| | | | |
|-----------|--|-----------------------|--------------------------|
| Hibiclens | 4% chlorhexidine, 4% isopropyl alcohol | Mölnlycke Health Care | Most Dental Distributors |
|-----------|--|-----------------------|--------------------------|

Hand Rub Ethyl Alcohol Gel

| | | | |
|----------------------|---|-----------|------------------------------|
| ZaPro Hand Sanitizer | 94% wt ethyl alcohol gel .05% zinc pyrithione in cellulose. Dries on hands quickly. | Cao Group | 877-877-9778 caogroup.com |
| Purell Advanced | 70% volume ethyl alcohol gel | GoJo | Most Dental Distributors |

STERILIZERS

Efficacy Criteria: Provide sterilization of instruments to meet FDA specifications, with minimal damage to instruments.

Steam Heat Sterilizer, Rapid

| | | | |
|------------------------|--|--------|------------|
| StatIM G4 (2000, 5000) | 2000: steam; small chamber (107.8 in ³) 5000: steam; large chamber (315 in ³) | SciCan | scican.com |
|------------------------|--|--------|------------|

Steam Heat Sterilizer, Conventional

| | | | |
|----------------|---|-----------|------------------|
| EZ11Plus | Steam; large chamber (1,882 in ³) | Tuttnauer | tuttnauerusa.com |
| M11 UltraClave | Steam; large chamber (1,710 in ³) | Midmark | midmark.com |

STERILIZER MONITORS

Efficacy Criteria: Biological monitor that verifies heat sterilization.

In-office Biological Monitor

| | | | |
|----------------------------|---|----|-----------------|
| 3M Attest Mini Auto-reader | Sterilization monitor set that gives 24-minute results. (incubator & biological indicators) | 3M | henryschein.com |
|----------------------------|---|----|-----------------|

INSTRUMENT CLEANING & DISINFECTION

Efficacy Criteria: Instruments cleaned without hand touching & disinfected with chemicals verified to kill in presence of fresh human whole blood & other human proteins.

Instrument Washers for Cleaning Instruments Before Disinfection or Sterilization

| | | | |
|----------------------------|--------------------------------------|--------|--------------|
| Dental Washer Disinfectant | Under counter model #PG8581 | Miele | mieleusa.com |
| Hydrim L110W G4 | Under counter or free-standing model | SciCan | scican.com |

3+% Glutaraldehyde

| | | | |
|---------------|--------------------------|--------------|---------------------|
| Maxicide Plus | 3.4% glutaraldehyde soak | Henry Schein | henryschein.com |
| pdCARE Plus | 3.4% glutaraldehyde soak | Patterson | pattersondental.com |

Non-Glutaraldehyde Alternative for Individuals Sensitive to Glutaraldehyde

| | | | |
|-----------|------------------------|------------------------|--------------------------|
| Cidex OPA | 0.55% o-phthalaldehyde | Advanced Sterilization | Most Dental Distributors |
|-----------|------------------------|------------------------|--------------------------|

ZIRCONIA CROWNS: What dentists and labs need to know!



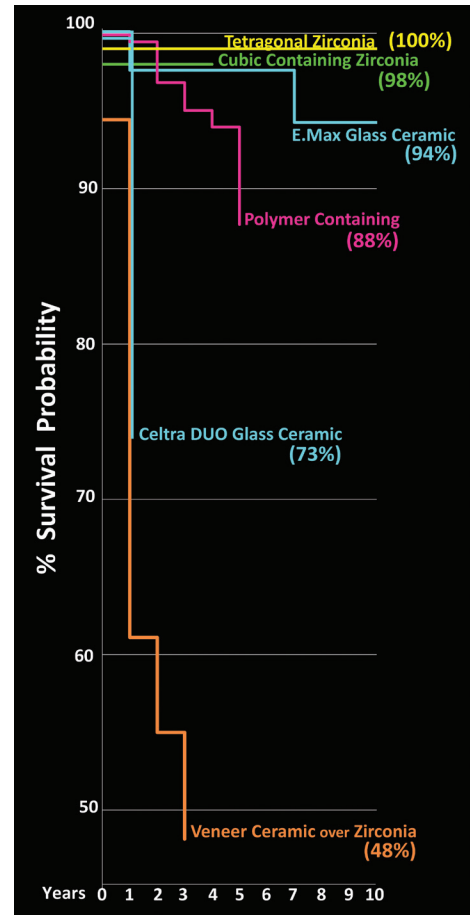
Uncertain economic futures have focused patients on **durability** and **affordability** of esthetic crowns. Our 10-year continuing study involving 121 dentists and 1,046 esthetic crowns shows **zirconia ceramics uniquely fulfill these criteria**. So far, **ALL of 16 different zirconia ceramics have 100% survival in clinical service**, with even the newer unproven esthetic zirconias all surviving their first service year without fracture. **This finding is unique to the zirconias vs. the other esthetic crown materials in this study.**

This report updates clinicians on:

- (1) Important terminology
- (2) Strength numbers they can expect
- (3) Clinical performance of a variety of zirconia formulations
- (4) Brand names tied to physical properties claimed by source companies
- (5) Emerging contra-indications for zirconia.

Crown Survival Graph (Kaplan Meier) shows **fracture survival up to 10 years of 1,046 esthetic molar crowns from 5 material categories.**

NOTE: Only the 2 Categories of zirconia (Tetragonal and Cubic Containing) have NO fractures in service.



1. Critical facts about zirconia—Why isn't this information communicated with every crown?

Transparency about zirconia formulation, physical properties, clinical indications, and specific brand name milled should be **MANDATORY** for every restoration delivered to dentists and their patients. Lack of this information is causing misunderstandings leading to poor choices and handling that affect restoration durability. Patients want restorations that appear to be their natural teeth—and they expect them to last! This study is showing zirconia has potential to fulfill these patient expectations. However, labs & dentists must have **correct information**. The fickle strength numbers are a large part of the overall problem, along with the aggressive promotion of the unproven Cubic Containing 4Y & 5Y formulations, and secrecy about additives to the zirconium oxide which could negatively affect some patients with hypersensitivity issues.

EXPLANATION OF CHART BELOW:

Column (1) lists in red the commonly used “Y” terminology (which refers to the “mol %” of the oxide yttria in the formulation), and lists in black the correct terminology established by international agreement.

Column (2) lists the amount of yttria in the formulation by “mol %” (red) and by weight % (black).

Column (3) lists the approximate ratio of the strong Tetragonal versus the weaker Cubic crystals in the 3Y, 4Y, and 5Y formulations.

Columns (4) and (5) list the flexural strengths and fracture toughness values agreed upon internationally as reasonable expectations for the Tetragonal and Cubic Containing zirconia formulations.

Columns (6), (7), and 8 list the flexural strengths and fracture toughness values claimed by the companies selling the brand names listed.

| INFORMATION NEEDED TO UNDERSTAND ZIRCONIA | | | | | STRENGTHS, FRACTURE TOUGHNESS & CLASS CLAIMED BY SOURCE COMPANY ★ | | |
|---|--|---|--|------------------------------------|---|-----------------------------------|-------------------------------------|
| (1) Commonly Used Terms Correct Terms | (2) Mol % Yttria * Weight % Yttria | (3) | (4) & (5) Internationally Agreed Upon Numbers for the 2 Zirconia Classes | | (6) Flexural Strength (MPa) | (7) Fracture Toughness (MPa√m) | (8) Brand Names & Source Company |
| | | | Flexural Strength | Fracture Toughness | | | |
| | | | 3Y Zirconia Tetragonal or Class 5 Zirconia | 3 mol % 4.5–6.0 weight % | | | |
| 1100 | ? | Alien Multi-Layer (Alien Milling Technologies) | | | | | |
| 1250 | testing in process | ArgenZ HT+ (Argen) | | | | | |
| 1100+ | 5.0 | BruxZir (2009) (Glidewell) | | | | | |
| 800 | 5.0 | BruxZir NOW (Glidewell) | | | | | |
| 1100+ | 5.0 | BruxZir Shaded (Glidewell) | | | | | |
| 1243 | 5.1 | ZirCAD LT (Ivoclar Vivadent) | | | | | |
| 1200 | 5.1 | ZirCAD Prime Core and ZirCAD Prime Incisal (Ivoclar Vivadent) | | | | | |
| 4Y Zirconia Cubic Containing or Class 4 Zirconia | ≥4 mol % 6.0–8.0 weight % | ~75% Tetragonal & ~25% Cubic | >500 MPa | >3.5 | 850 | 3.6 | ZirCAD MT (Ivoclar Vivadent) |
| | | | | | 1200+ | 5.0+ | Zirlux 16+ (Zahn Dental) |
| 5Y Zirconia Cubic Containing or Class 4 Zirconia | ≥5 mol % 9.05–10.0 weight % | ~50% Tetragonal & ~50% Cubic | >500 MPa ● | >3.5 ● | 650 | 2.1 | BruxZir Anterior (Glidewell) |
| | | | | | 870 | 2.7–3.1 | BruxZir Esthetic (Glidewell) |
| | | | | | 720 | 4.8 | CubeX ² (Dental Direct) |
| | | | | | 748 | 3.2 | Katana STML (Kuraray Noritake) |
| | | | | | 800 | >4.0 | Lava Esthetic (3M) |
| ● NOTE: ISO does not differentiate between Cubic Containing Zirconia formulations 4Y & 5Y | | | | | | | |

* Yttria: An oxide added originally to zirconium to stabilize the crystal structure in its strongest Tetragonal configuration, now increased to change refractive index and give zirconia more translucence, but increase in yttria results in **strength reductions**.

★ Claimed Strengths & Fracture Toughness: **Marketing, use of different test methods, and manipulation of techniques cause important variations in strengths claimed by different companies.**

SUMMARY:

- As more yttria is added to improve esthetics (3Y versus 4Y–5Y), the strength and fracture toughness decrease.
- As the percentage of strong Tetragonal phase zirconia is replaced by the weaker Cubic phase (3Y versus 4Y–5Y), the strength and fracture toughness decrease.
- Market competition encourages exaggeration of strength and fracture toughness numbers beyond those generally expected which leads clinicians to choose the less proven Cubic Containing zirconia over the well-proven Tetragonal zirconia since strengths and fracture toughness appear similar in ads, when they are not.

2. Which brands and zirconia categories are in this study—and what has been observed?

| Brand Name | Mol % Yttria | 2020 Service Years | 2020 % Clinical Survival |
|--|--------------|--------------------|--------------------------|
| Tetragonal Zirconia (“3Y”) | | | |
| Alien HT | 3Y | 1 | 100 |
| Alien Multi-Layer | 3Y | 1 | 100 |
| ArgenZ HT+ | 3Y | 1 | 100 |
| BruXZir (2009) | 3Y | 10 | 100 |
| BruXZir Now | 3Y | 2 | 100 |
| BruXZir Shaded | 3Y | 1 | 100 |
| Pavati Z40.1 | 3Y | 2 | 100 |
| ZirCAD LT | 3Y | 4 | 100 |
| ZirCAD Prime | 3Y core | 1 | 100 |
| Zirlux 16+ | 3Y | 3 | 100 |
| Cubic Containing Zirconia (“4Y & 5Y”) | | | |
| ZirCAD MT | 4Y | 1 | 100 |
| High Strength Glass Ceramic | | | |
| BruXZir Anterior | 5.5Y | 2 | 100 |
| BruXZir Esthetic | 4.7–4.9Y | 1 | 100 |
| CubeX ² | 5Y | 1 | 100 |
| Katana STML | 5–5.5Y | 4 | 100 |
| Lava Esthetic | 5Y | 3 | 100 |
| ZirCAD Prime | 5Y incisal | 1 | 100 |
| Polymer Containing | | | |
| Camouflage Now | — | 2 | 98 |
| CeraSmart | — | 4 | 93 |
| Enamic | — | 4 | 94 |
| Lava Ultimate | — | 5 | 89 |
| Veneer Ceramic over Zirconia | | | |
| Press Ceram/Metoxit | 3Y | 3 | 48 |

DURABILITY & ESTHETIC OBSERVATIONS BY CATEGORY

● Tetragonal Zirconia (“3Y”)

- **Abuse Tolerance:** EXCELLENT, whether or not cemented. With minimal preparations (*similar to cast gold prep*), BruXZir (2009) has survived below stresses for 10+ years:
 - coarse diamond recontouring while hand held before cementing
 - very thin small zirconia areas on occlusal or axial walls
 - all levels and types of occlusal habits
 - refusal to wear night guard
 - endo entry access
- **Blend with surrounding dentition:** FAIR to GOOD, but can be EXCELLENT if skilled lab stains in green state, fires correctly, & polishes carefully without over polishing to gray iridescence.

● Cubic Containing Zirconia (“4Y & 5Y”)

- **Abuse Tolerance:** VERY GOOD so far—*after cementation*. These formulations are newer and not yet fully proven, but this study shows materials in this category require careful handling:
 - **Following brands did not always tolerate handheld recontouring and overall 1% fractured before cementation:**

| | |
|-------------------|------------------|
| Alien Multi-Layer | BruXZir Anterior |
| BruXZir Esthetic | CubeX2 |
 - do not tolerate very thin areas
 - may fracture during endo entry access (*endo entry with Class 4 zirconia not needed in this study yet, BUT fracture has been reported by CR readers*). (*Endodontic referral dentist needs warning of possible fracture.*)
- **Blend with surrounding dentition:** VERY GOOD & can be EXCELLENT if lab technician is careful.

● High Strength Glass Ceramics

- **Abuse Tolerance:** E.Max in molars VERY GOOD. With tooth preps used in this study (*1.5 to 2.0 mm occlusal, 1.5 axial, deep chamfer margin*), it had 94% fracture survival in 10+ years. **Celtra DUO in molars POOR.** It had 73% fracture survival during 1 service year.
- **Blend with surrounding dentition:** GENERALLY EXCELLENT.

● Polymer Containing

- **Abuse Tolerance in molars:** GOOD with 88% fracture survival up to 5 years BUT retention failure (debonds) was unusually high in this category at 25–36%, except for CAMouflageNOW which had only 4% retention failure after 2 service years. **Other crown categories in this study each had ±2% retention failure.**
- **Blend with surrounding dentition:** VERY GOOD to EXCELLENT.

● Veneer Ceramic over Zirconia

- **Abuse Tolerance:** POOR. These had 52% of crowns with large veneer ceramic fractures compromising occlusion and/or proximal contacts by 3 service years.
- **Blend with surrounding dentition:** GOOD to EXCELLENT, depending on lab technician.

3. What internationally agreed upon information on ceramics do I need to know?

| International Terminology | Porcelains | Leucite Glass-Ceramics | Lithium Disilicate High Strength Glass Ceramics | Cubic Containing Zirconia | Tetragonal Zirconia |
|--|---|---|---|---|---|
| Classes of Ceramics | Class 1 | Class 2 | Class 3 | Class 4 "4Y & 5Y" Zirconia | Class 5 "3Y" Zirconia |
| International Agreed Upon Strengths to Expect in Each Class | Flexural Strength: <100 MPa Fracture Toughness: <1.0 | Flexural Strength: >100 MPa Fracture Toughness: >1.0 | Flexural Strength: >300 MPa Fracture Toughness: >2 | Flexural Strength: >500 MPa Fracture Toughness: >3.5 | Flexural Strength: >800 MPa Fracture Toughness: >5 |
| Suggested Appropriate Clinical Uses | Veneering Ceramics | Single Unit Anterior or Posterior Adhesively Cemented | Single Unit Anterior or Posterior | Single Unit Anterior or Posterior | 4 or More Units Anterior or Posterior |
| International ISO 6872 Specification on Ceramic Classification shown in chart form. For FDA registration, companies must present data to prove they are either a Class 4 or Class 5 zirconia. (Chart adapted from Morris G. <i>Esthetic Ceramic Restorations using ADA Approved ISO Standards</i> . <i>J Dent Technology</i> 2018; 22–24.) | | | | | |

NOTE: Lab prescriptions specifying just "zirconia" or checking a brand name on a form without knowing true strengths are *negligent*.

4. What are **CONTRA-INDICATIONS** for any class of zirconia? (where appropriate cast metal may be indicated)

- Tooth preparations allowing less than 0.6 mm occlusal reduction and corresponding inadequate wall thickness.
- Zirconia opposing zirconia in extremely active heavy occlusions to avoid microscopic breakdown. (See Fig. 1 below.)
- When opposing contact is cast gold or polymer to avoid extreme wear. (See Fig. 2 below.)
- Where precision attachments are indicated.
- Where optimum esthetics is a priority (unless the lab knows how to stain in green state, fire correctly, & polish without over polishing to gray iridescence (no glaze used)).

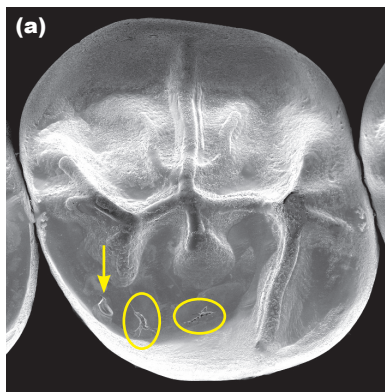


Figure 1. (a) Scanning electron microscope (SEM) 10x image shows 1 chip (arrow) & 2 very small stress areas (ovals) on 8-year Class 5 zirconia. (b) Far right oval area magnified to 110x looks ominous, but it has changed little in 8 years of heavy 24/7 bruxing on zirconia opposing zirconia crowns.

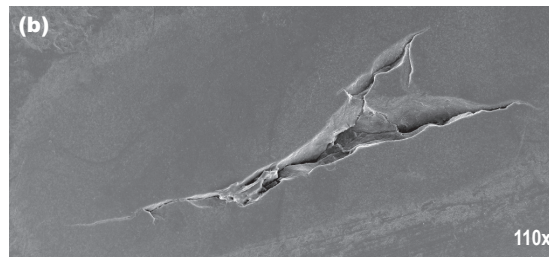
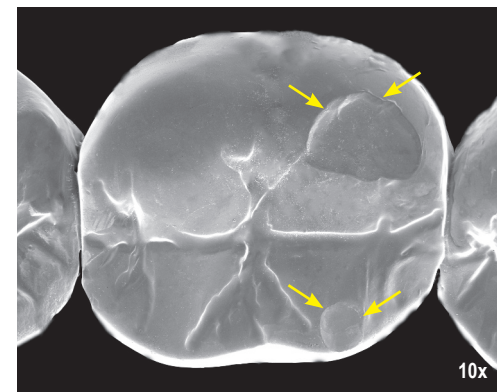


Figure 2. SEM 10x image of cast gold opposing Class 4 zirconia at 3 service years.



KEY CLINICAL ACTION POINTS FROM THIS RESEARCH ARE:

- (1) If the patient is seeking durability and affordability, choose Class 5 zirconia whenever possible. BruxZir (2009), now called BruxZir Shaded, has demonstrated excellent durability for 10+ years, and its laboratory fees have not changed since 2009. Class 5 zirconias have the strength and toughness to deliver a margin of safety needed to survive common clinical abuses.
- (2) The terminology and numbers in the table above on this page should be memorized or posted on your wall, and sent to your laboratory technician to post on his/her wall so you can communicate.
- (3) Demand that your lab provide essential legal data with each restoration. This includes: ● Brand name of the zirconia disk milled for that restoration, ● Zirconia ISO Class, ● Mol % additives to the zirconium oxide (IdentCeram Certificates do not fulfill these needs, but they provide the only listing of zirconia content available today, and should also be provided with each restoration). **NOTE:** This information is **CRITICAL** because 1) It is unwise to place materials in patient's bodies without full disclosure of constituents, 2) Rogue zirconia disks are sold directly to labs from unknown sources without FDA clearance documents available, making content and quality unknown.
- (4) Collect independent data on performance of specific brand names of zirconia. Choose which you prefer and always specify brand name on every prescription—otherwise the laboratory chooses, and this may or may not be what you had in mind for the patient.
- (5) E.max Class 3 non-zirconia ceramic has performed extremely well in this clinical study. It has esthetics and strength well suited to anterior restorations, but is not the most durable choice for molars.
- (6) The Cubic Containing zirconias began to appear in the U.S. about 5 years AFTER BruxZir. Their clinical durability is **NOT YET PROVEN** and is confounded by the ongoing introduction of additional formulations. *In vitro* research on Cubic Containing formulations that exceed 4.5 mol % yttria report performance similar to E.max, indicating best for anterior restorations and less durable on molars.
- (7) Zirconia does not outperform and outdate metals in all cases. Cast metal and PFM restorations are still indicated (see Section 4 above).